

## 2016 SPARK



**BIG ON FUN.  
BIG ON TECHNOLOGY.**

Fuel efficiency  
(combined)  
**5.1**  
l/100KM



Safety  
**2**  
Air bags



Engine  
**1.4**  
Liters



Max.  
Seating  
**5**  
Seats



### SELECT SPECIFICATIONS

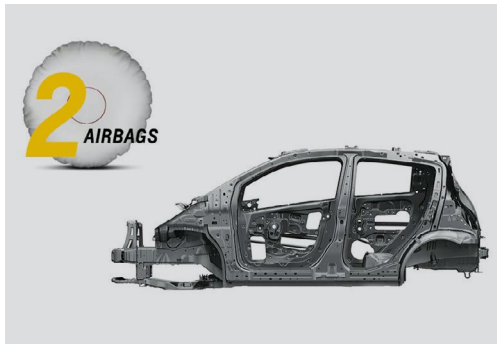
● STANDARD ○ AVAILABLE – NOT AVAILABLE

PERFORMANCE	LS	LT
Engine, 1.4L DOHC 4-cylinder MFI	●	●
Transmission, Continuous Variable (CVT)	○	●
Cruise Control	–	●

EXTERIOR	LS	LT
Door Handles - Body Color	●	●
Lock control, liftgate	●	●
Bumpers, front and rear, body-color	●	●
Headlamps, halogen	●	●
Mirrors, outside power-adjustable, body-color	●	●
Spoiler, rear, Sport	●	●
Wheels, 14" steel	●	–
Wheels, 15"x6" aluminum	–	●

INTERIOR	LS	LT
Cargo security shelf, rear	●	●
Door locks, power, side-door	●	●
Door locks, power, emergency unlock, automatic	●	●
Driver Information Center	●	●
Seats, second row 60/40 split-bench	●	●
Windows, power with driver Express-Up and Down	–	●
Steering, power	●	●
Steering wheel, leather-wrapped	–	○
Visors, driver and front passenger vanity mirrors	–	●
Keyless start, switch	–	○
Lock control system	–	○
Audio system, infotainment system (Chevrolet MyLink)	–	○

SAFETY	LS	LT
Air bags, frontal, driver and right front passenger	●	●
Sensor, front air bag	●	●
StabiliTrak, stability control system with Brake Assist (Std for GCC) (Linked to CVT for Levant)	●	●
Rear Park Assist	–	○



## ***UPTOWN, DOWNTOWN AND EVERYWHERE IN BETWEEN.***

Offering up the most powerful 1.4L engine in its class, Spark is the fuel-efficient car that turns heads and turns new corners in providing confidence as well as control. The Spark is also designed for a confident drive every time you get behind the wheel. In addition to 2 standard air bags, antilock brakes and a high-strength steel safety cage, Spark offers a number of available safety features to help you stay safe on the road.

## ***HELLO, TECHNOLOGY.***

Spark might be compact, but when it comes to technology, this ride is filled with features. Spark is the first car in its class to offer Phone Integration Technology. With this intuitive bit of tech, you can interact with certain features of your smartphone using voice commands or the Chevrolet MyLink touch-screen display in your car. It's smart, convenient and helps you keep your eyes on the road instead of your phone.

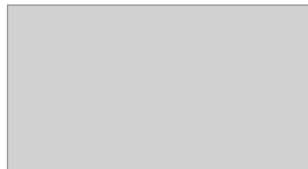
## ***AVAILABLE EXTERIOR COLORS***



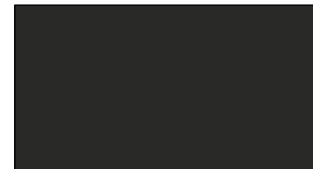
FRESH GREEN LIME METALLIC



URBAN TITANIUM GRAY METALLIC



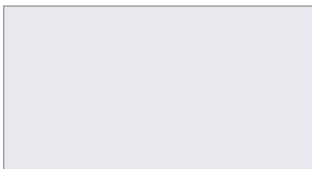
SWITCHBLADE SILVER METALLIC



CARBON FLASH METALLIC



SOLAR RED



SUMMIT WHITE



BLUE RAY METALLIC



SPLASH METALLIC

***FIND NEW ROADS™***